

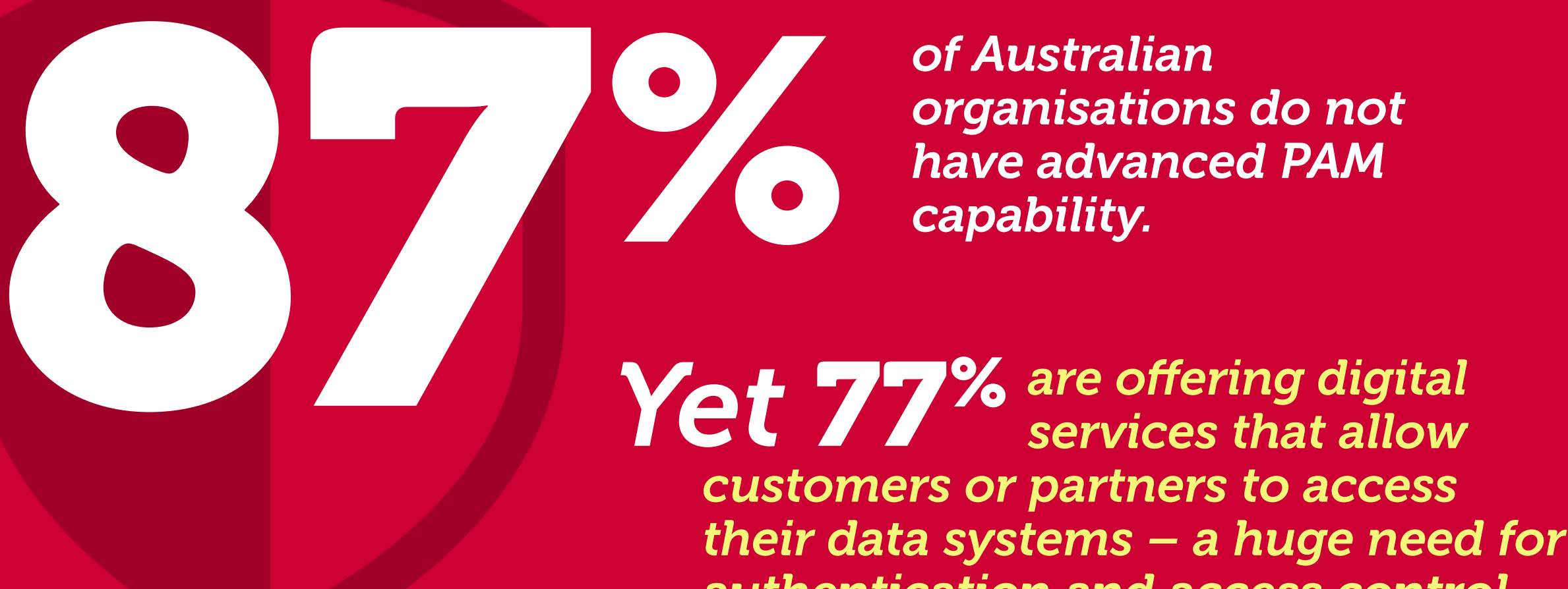
The growing need for PAM in the digital and remote working era

The rise of digital and cloud access, accelerated by the onset of remote work, have highlighted the struggles organisations have in managing, auditing and protecting privileged user accounts. Privileged Access Management (PAM) is no longer a nice-to-have, but a necessity to control and manage who has access to what, where and when.

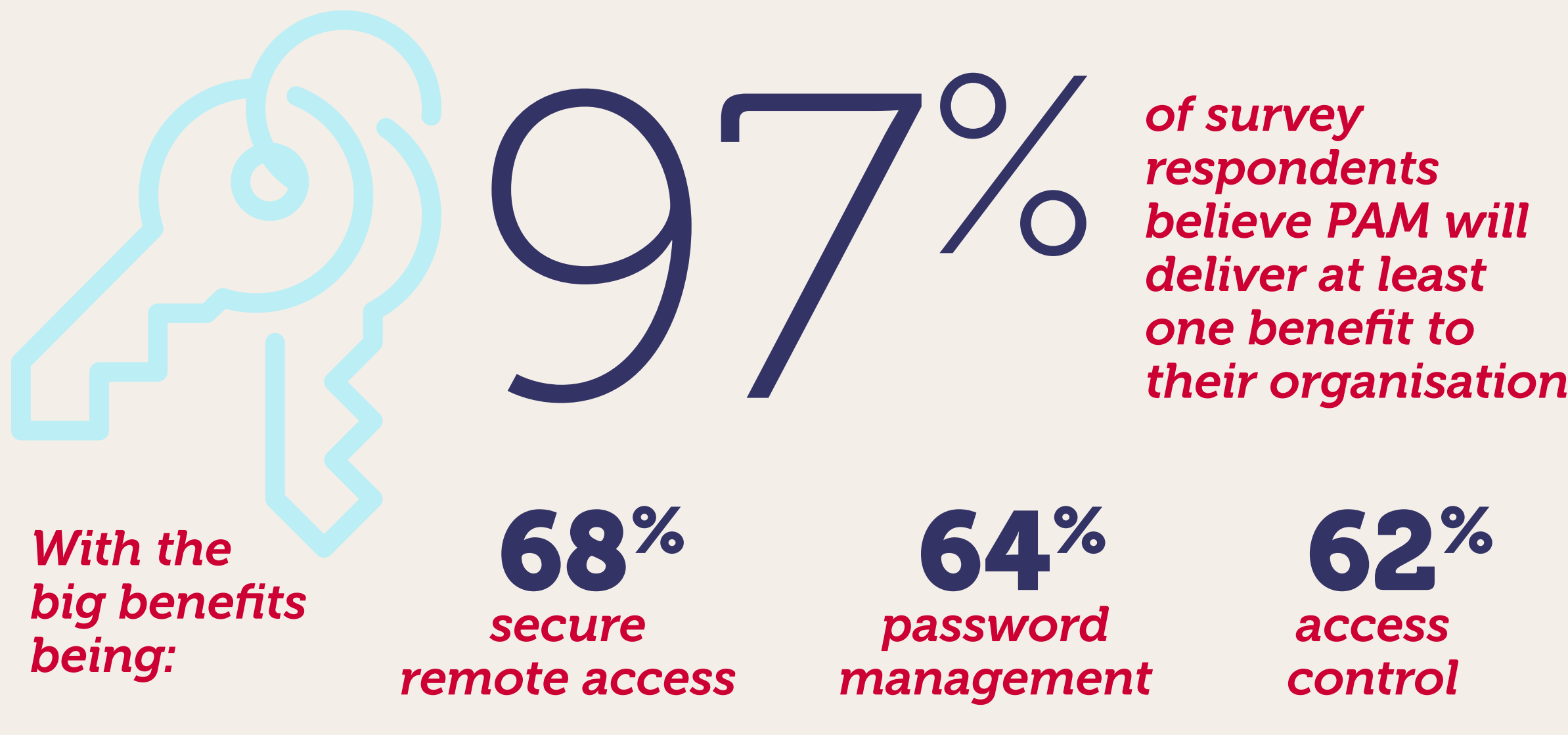
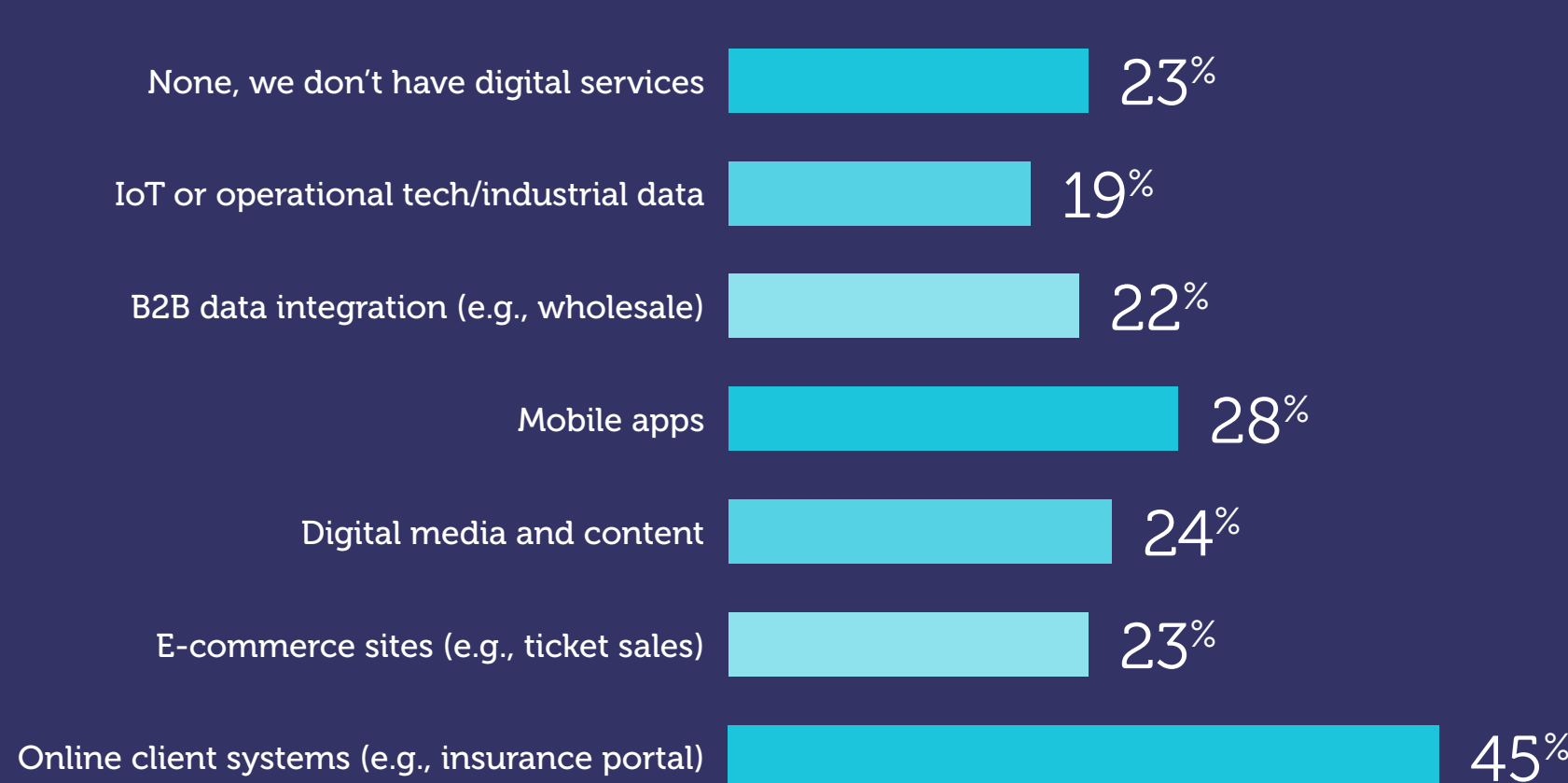
To understand how organisations use PAM, iTnews and BeyondTrust asked IT leaders about the importance of Privileged Access Management and found most do not have an adequate PAM capability. While some survey respondents view PAM as difficult to deploy and use an overwhelming majority recognise its value.

For organisations to protect the information and systems most critical to their business in this evolving era of cloud and remote work, PAM must become a key part of their system and application workflows.

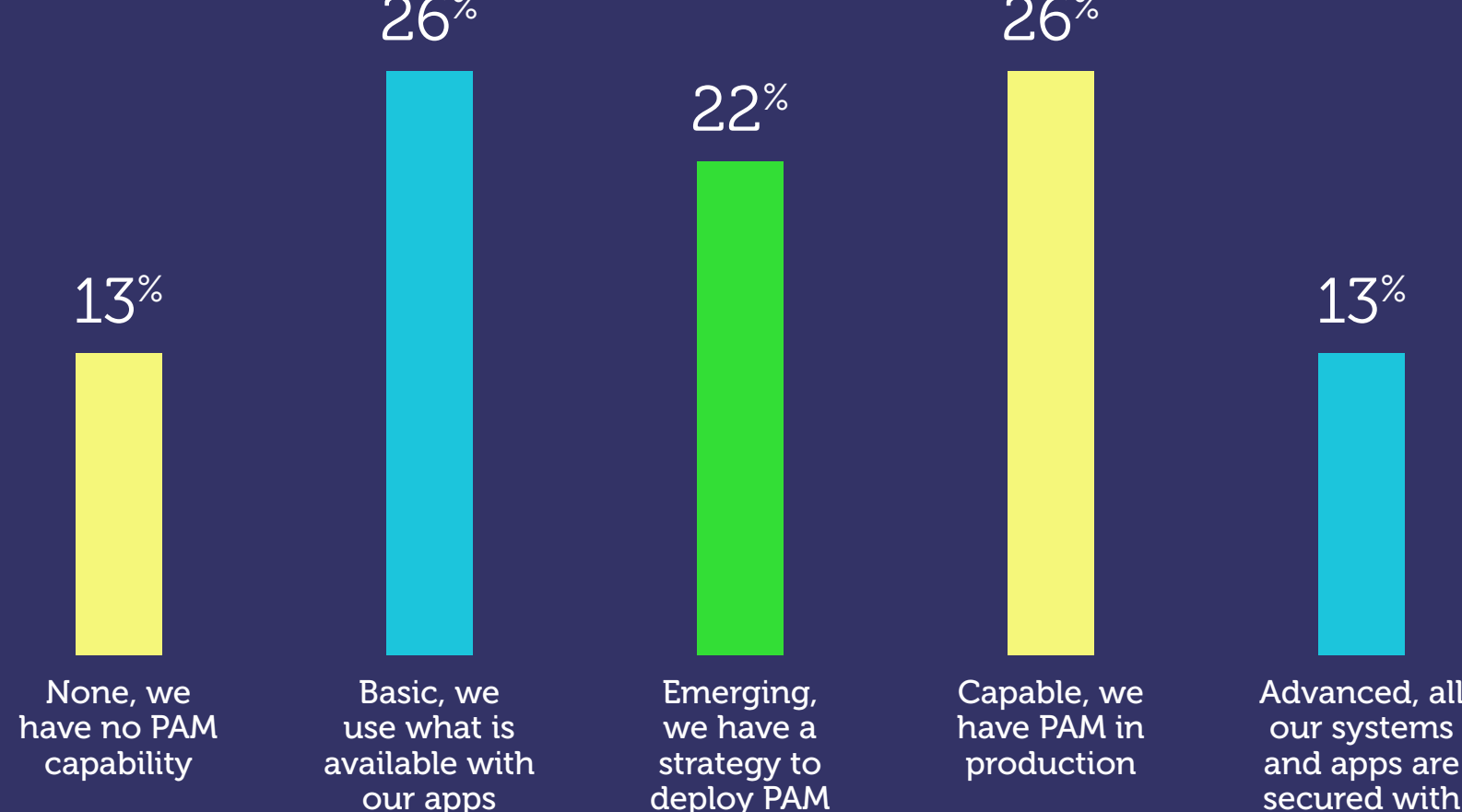
With PAM in place, business and IT leaders can transform their organisations with confidence and develop new products and services with security at the forefront.



Does your organisation offer digital services that allow many people to access your data systems, regardless of where it is hosted?



What is your organisation's maturity when it comes to privileged access management (PAM)?

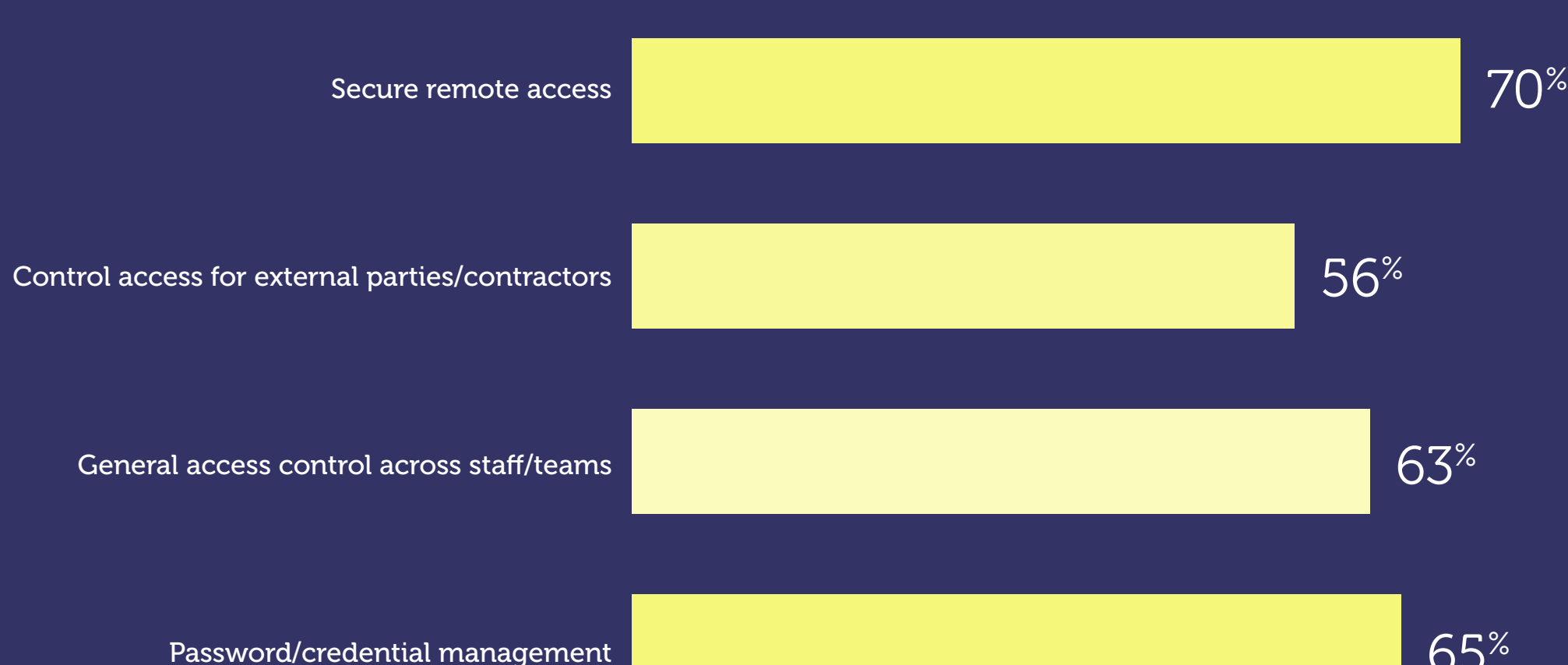


With the rise in supply-chain attacks,

1 in 2

say PAM will help secure collaboration by controlling access for external parties and contractors, with **73%** having at least one third-party accessing the network to collaborate

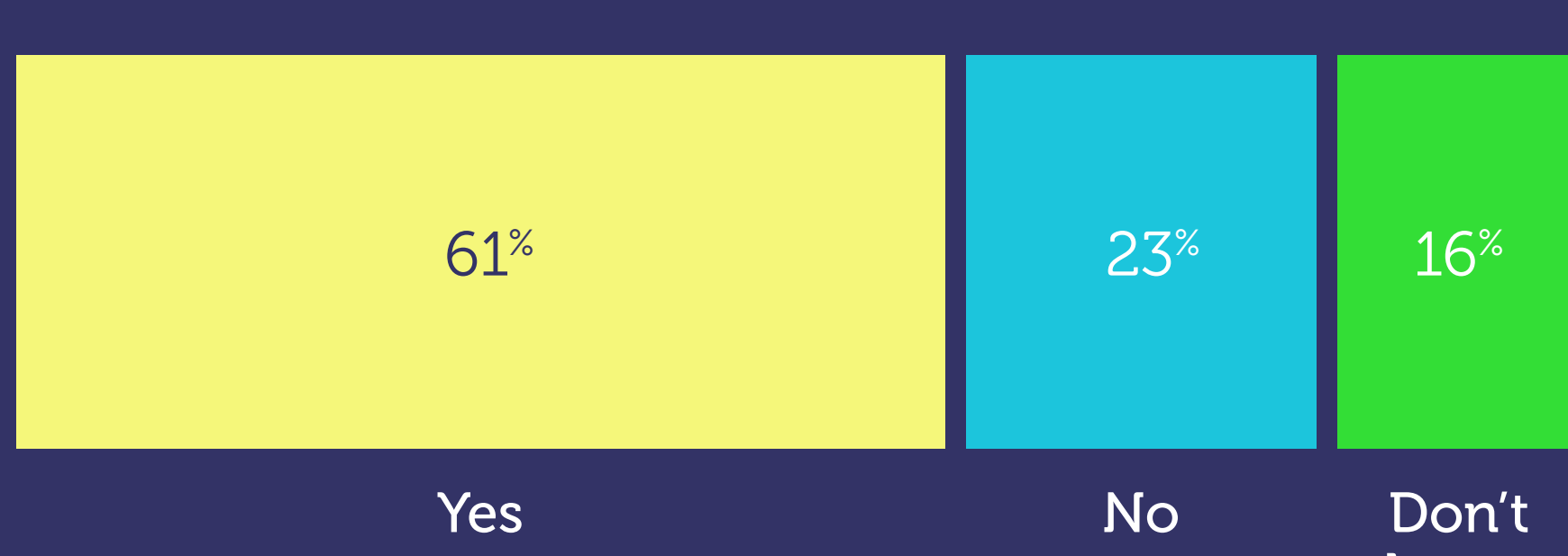
Please indicate how PAM might help your organisation?



80%

are looking to invest in a PAM solution indicating a strong appetite to improve security and workflows as the move to hybrid work is driving the need for PAM in **6 out of 10** organisations

Has the move to hybrid working made your organisation more aware of the need for PAM?



About how many third-parties (including contractors) have access to your organisation's network to collaborate?

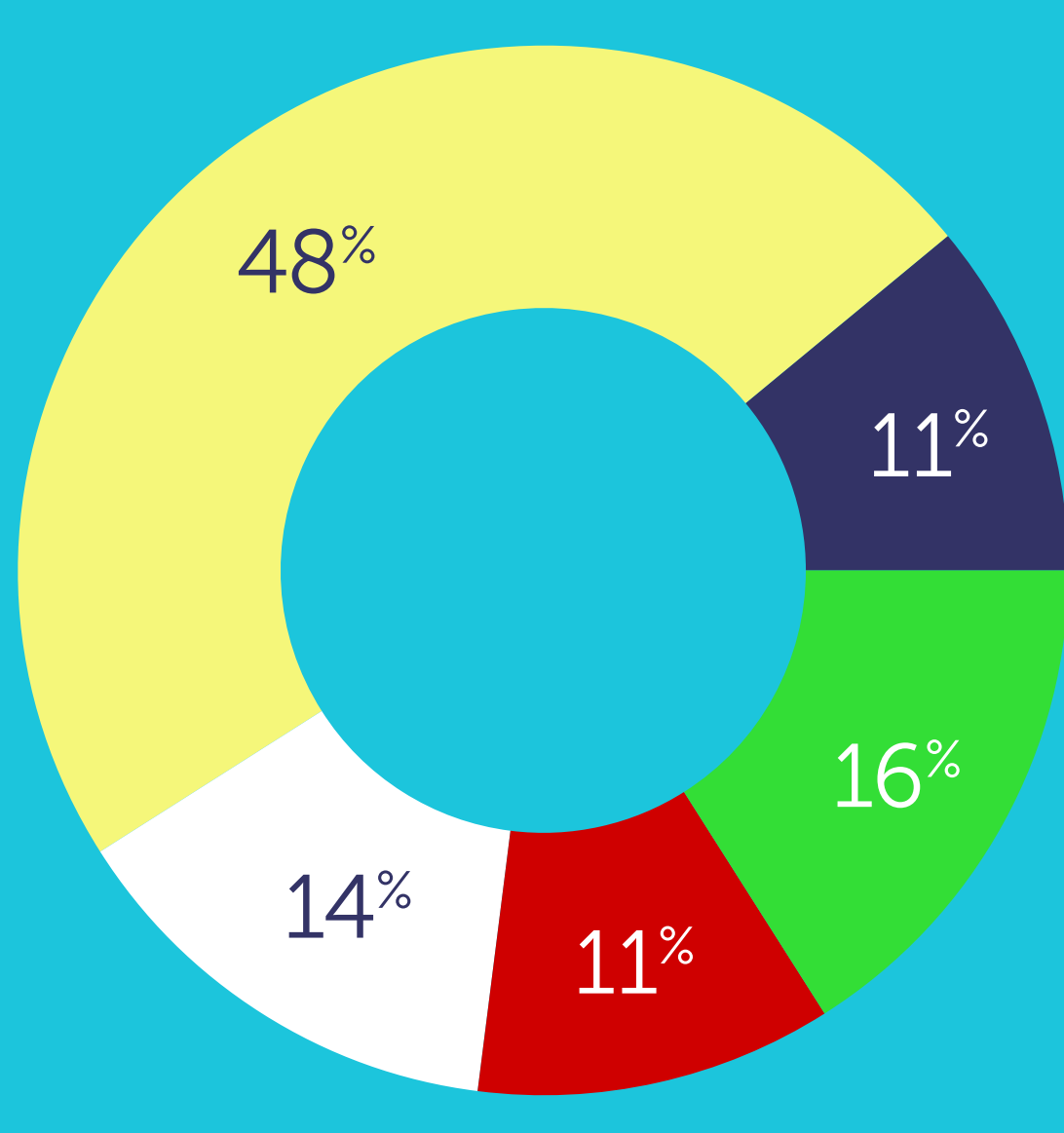
None

From 1 to 20

From 21 to 100

More than 100

Don't know



About the survey

This survey was conducted in July and August 2021 by iTnews on behalf of BeyondTrust, and attracted 123 respondents: 41.47% were IT managers or IT directors, 27.64% were IT professionals, including developers, analysts and engineers, and the rest included people in sales and marketing roles, CEOs, CFOs, GMs or MDs, those in analysis, consulting or education roles or similar, in addition to people in other roles. Looking at the size of their organisations, 26.02% worked for employers that have more than 2,500 staff members, 18.70% were at organisations with less than 10 people, while 17.07% worked for companies that employ 10-49 people.