



# Keeps a 24-Hour eye on your data and intercepts risky behaviour.

## Reduce your information Risk

### VISIBILITY ACROSS ALL CHANNELS

Eliminate your Blind Spots with  
**100% Visibility**



#### Offline

USBs, Printers, Laptops,  
Mobile, Work from  
Home, Mobility



#### Online

Web, Chats, Cloud, Free  
Emails



#### Corporate Apps

Microsoft 365, APPs,  
Cloud, Personal  
Mobile



#### AI

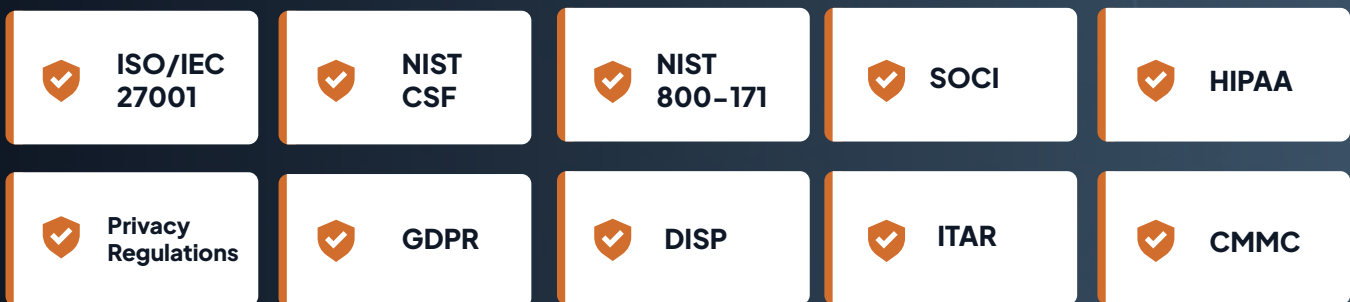
APPs and Web

## Key Information Risks–Mitigated by INSIGHT



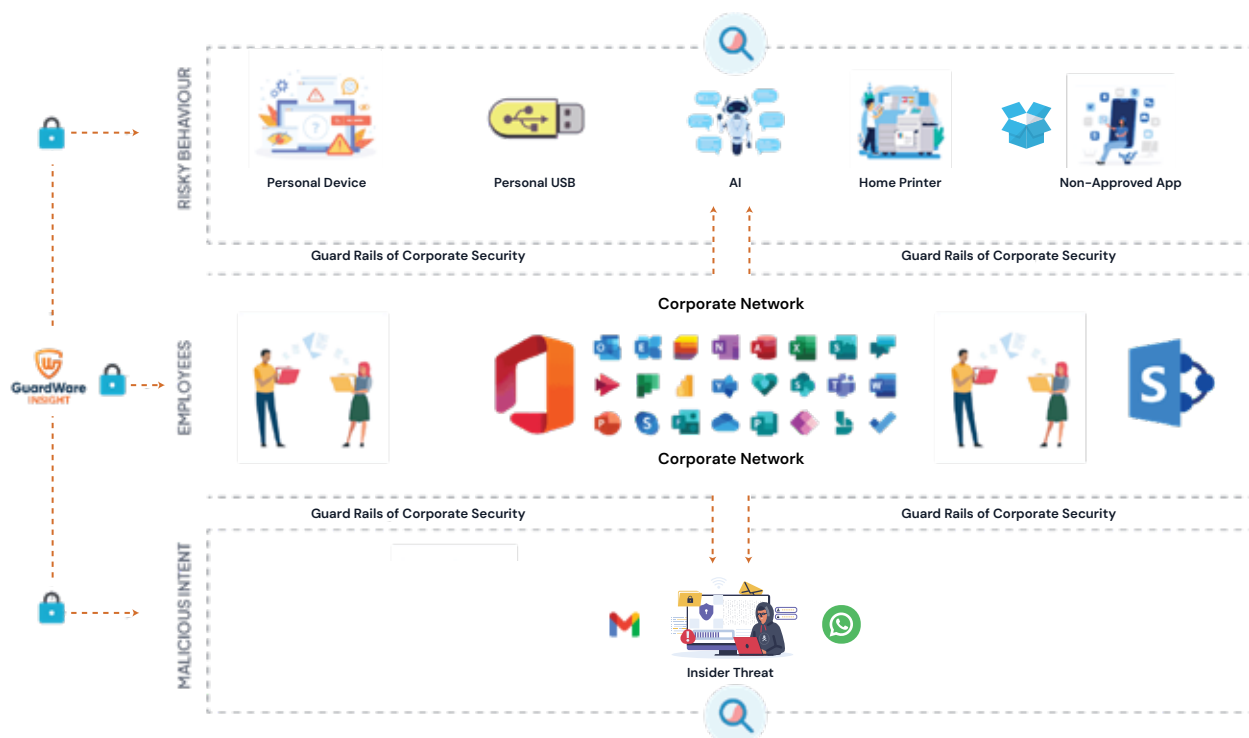
## Simplifies Compliance

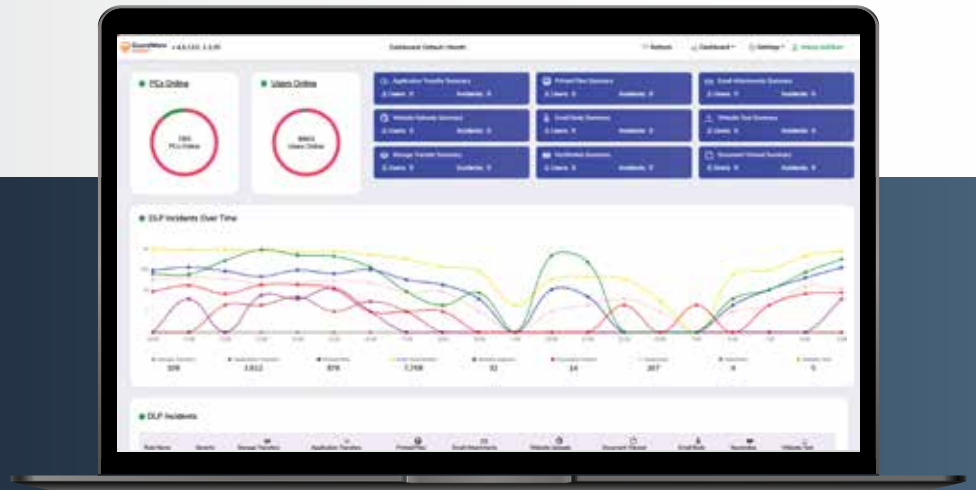
"INSIGHT mitigates all information risks with continuous monitoring, alerts, and automated user education."



## One-Stop Solution

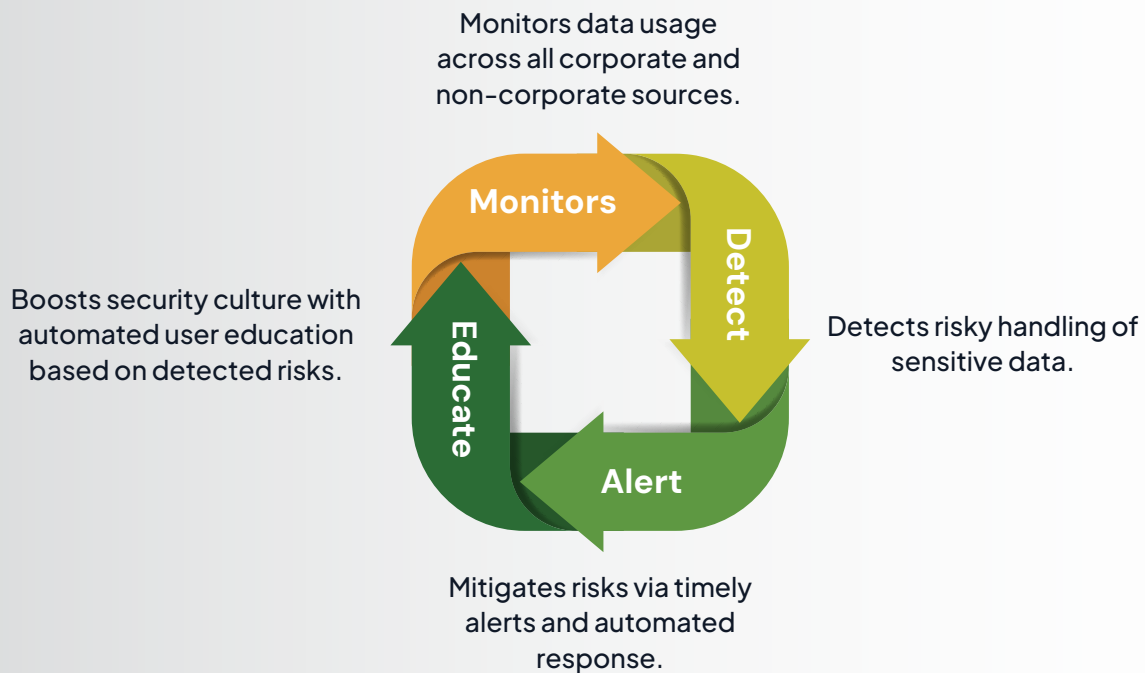
Covers all channels and eliminates blind spots.





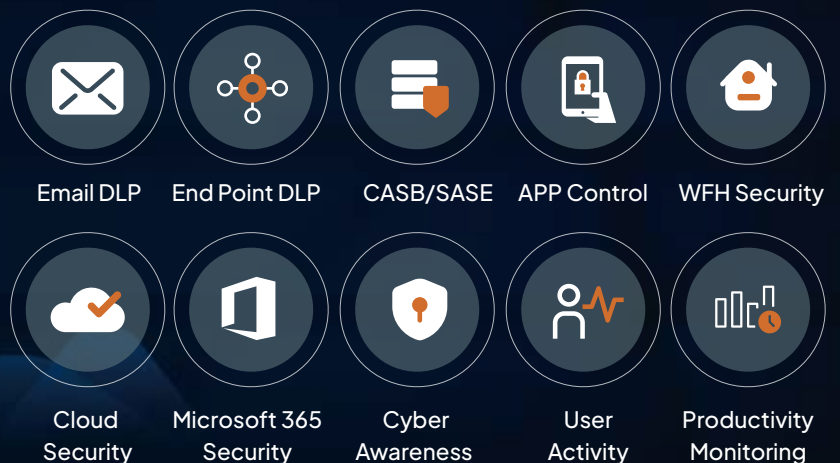
**See All Risks in a Single Dashboard**

**Strengthens security and drives cultural change in four steps.**



**Easy to Use, Cost Effective.**

A one-stop Information security solution for SMBs and large organizations.

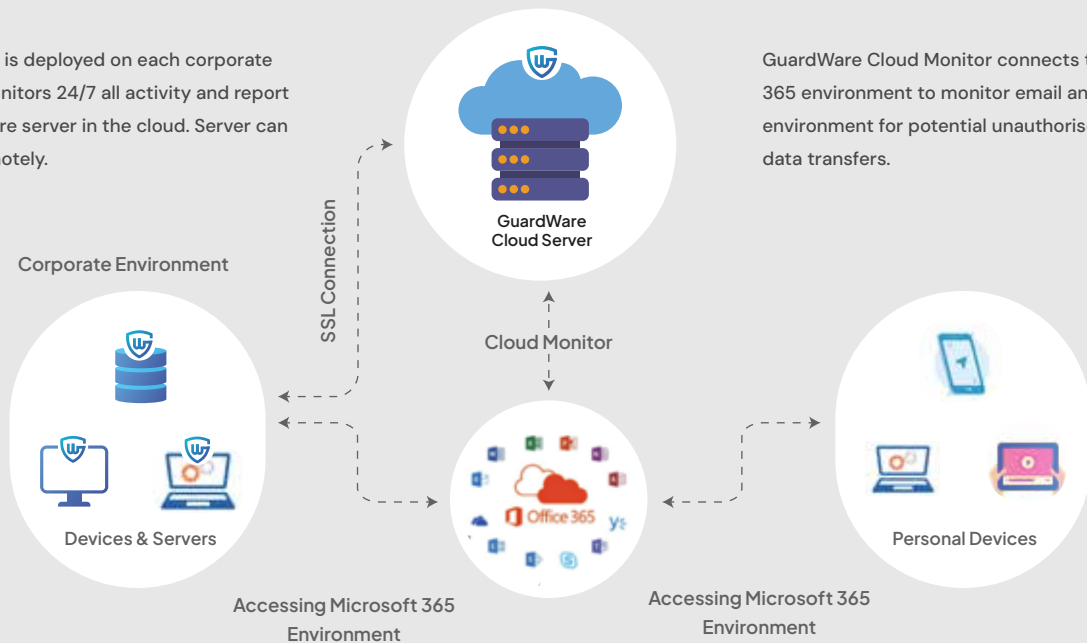


# GuardWare Architecture

Data is monitored across all corporate devices, servers and via Microsoft 365 cloud monitor on personal devices.

GuardWare Agent is deployed on each corporate devices which monitors 24/7 all activity and report it to the GuardWare server in the cloud. Server can be monitored remotely.

GuardWare Cloud Monitor connects to Microsoft 365 environment to monitor email and SharePoint environment for potential unauthorised access and data transfers.



## Agent Specs

- > MSI Package (60MB Approx.)
- > Communication: Port 443 to server
- > GuardWare Cloud uses standard O365 API Connector

## Supported Environment

- > Windows 10 and above
- > Client Communicate with Server using port 443
- > Web traffic monitored using local proxy

## Operating Systems.

- > Windows 10 (32bit and 64bit)
- > Windows 11
- > Windows Server 2012 and above
- > Citrix, MS TS Servers

## Server and Configuration

- > Hosted in Azure or AWS local instances
- > User and Department Based Policies
- > Multiple alerting mechanisms.
- > Data encrypted at database level.
- > Data held for upto 6 months.

## Integration

- > Local and Azure Active Directory
- > SIEM

## Monitoring Capabilities:

- > Digestion of SSL traffic covers most corporate and personal channels.
- > Specialised method for monitoring content in proprietary encryption protocols used by channels like WhatsApp, telegram and AI tools.
- > Monitoring of local email via plugins.
- > File System drivers used for monitoring file access and transfers via Desktop APPs and external storage media.
- > OCR for deciphering text in images and scanned documents.
- > Analysis of Microsoft 365 email and SharePoint Logs

## Analysis and Reporting:

- > Content analysed by agents locally.
- > AI engine used in analysis.
- > Detected incident uploaded to server with snippets (Optional).
- > incident includes what, how, when and by whom details.
- > Incidents maintained encrypted in Server
- > **No Data Leaves the client network.**





# Securing Trust, Protecting Your Data

“

We now have complete visibility of data across our assets. In the very first week of monitoring we detected and prevented two data dumps to USB drives by staff... It is easy to use and has helped us improve our overall security and compliance requirements.

★★★★★

”

**Bobby Stojceski**

Chief Security Officer  
Penske Australia & New Zealand

“

Y Victoria needed proper governance for document management and retention. We partnered with GuardWare to monitor the use and movement of personal and sensitive data critical to our operations. GuardWare has been successfully used at the Y for ongoing data monitoring, ensuring protection against misuse, breaches, and data loss.

★★★★★

”

**Yonatan Amare**

IT Manager  
the Y

“

Bank of Punjab has been using the Guardware Guardware as part of the PCIDSS version 3.2.1 project implementation requirements since 2021. Bank of Punjab found the software efficient, up to the mark and user friendly. During the implementation of this software, it effectively detected the card data of selected end users as per defined rules.

★★★★★

”

**Ahmad Nasir**

Department Head –  
Global Compliance IT, The Bank of Punjab

**Get Started today.**  
**It's quick and simple to set up!**



## GuardWare

#1 in Data Security



Visit Us

**GuardWare Australia Trading Pty Ltd**

Address: 465 Victoria Avenue, Chatswood, Sydney 2067

Email: [sales@guardware.com.au](mailto:sales@guardware.com.au)

Phone: 02 8551 8500 | Website: [guardware.com.au](https://guardware.com.au)